

# Scott River Fall Chinook Spawning Ground Surveys 2017 Season



*Female Chinook Salmon found conserving energy on November 8<sup>th</sup> 2017, photo courtesy of Jed DeDobbeleer*

Work Completed by the  
Siskiyou Resource Conservation District  
for the  
United States Fish and Wildlife Service  
(Grant Agreement # F17AP00341)

**Report Prepared by Lindsay Magranet**

January 2018

## Contents

Introduction.....	2
Surveys.....	2
Lives.....	4
Biological Samples .....	4
Redds.....	5
Conclusions.....	6
References.....	6

## Introduction

The Scott River is an important spawning tributary for natural fall-run Chinook salmon in the Klamath Basin. Since 1992, escapement estimates have been compiled for the Scott River through cooperative spawning ground surveys organized by the California Department of Fish and Wildlife (CDFW) and the United States Forest Service (USFS). The objective of these surveys is to collect information on run parameters including the timing, duration, age composition, hatchery contribution and redd distribution. The monitoring of this independent Chinook salmon population provides valuable trend data including escapement estimates which are utilized by the Pacific Fisheries Management Council for the allocation of Klamath Basin fall run fish.

## Surveys

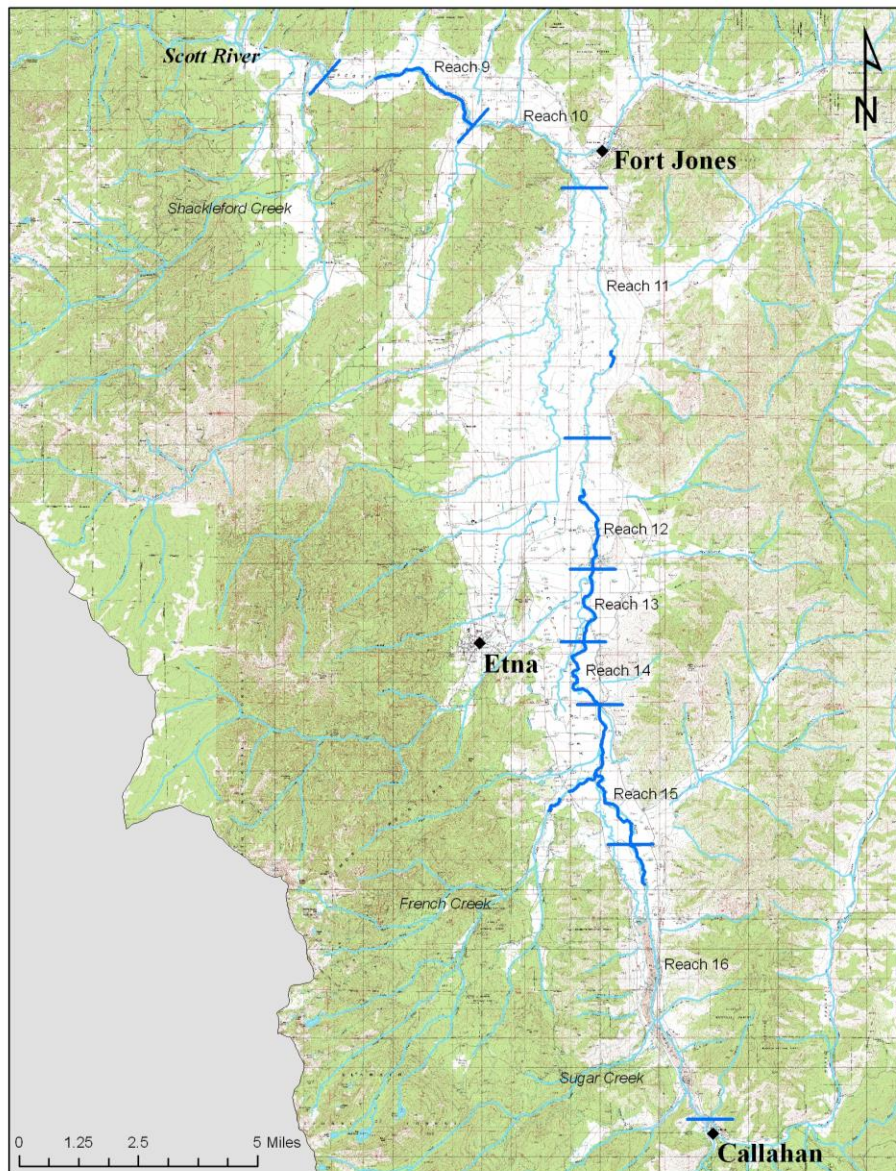
The Annual Scott River Spawning Ground Survey Training was held at Indian Scotty Campground on October 10<sup>th</sup>. All individuals who participated in the survey season attended the 2017 training day or a previous years training day. Several RCD staff members also attended the Whitewater Safety Training organized by the Lower Trinity, Orleans and Ukonom Ranger District on October 12<sup>th</sup>. RCD Crew leaders were Lindsay Magranet, Jim Morris and Erich Yokel (alternate). Jim Morris, a former high school teacher, involved Etna High School students in the surveys on several occasions. All surveys were carried out following protocols and procedures detailed in the Klamath Basin Cooperative Spawning Ground Survey 2017 Training Manual. Weather conditions over the 2017 season were ideal for the observation of spawning - low precipitation and stable flows.

The RCD initiated spawning ground surveys through the Index Reaches of the Scott River Valley on October 17<sup>th</sup> (Table 1). Scheduling involved a minimum of bi-weekly surveys of Index Reaches 12 through 15 as stream conditions permitted. Surveys were also regularly completed through portions of Index Reaches 9, 11 and 16 as the run progressed. Surveys through Reach 9 were focused on the upper 2.8 miles where more suitable spawning substrate was identified in 2016. A very limited extent of Reach 11 was surveyed in order to monitor a planned bank stabilization site. Only the lower portion of Reach 16 was surveyed because of a lack of connectivity through the historic mining tailings. A single survey was also completed through 1.2 miles of lower French Creek (independent of Index Reach 15). Map 1 indicates the index reach breaks and the tributary reaches surveyed.

It was determined that there was insufficient surface flow through the tailings piles until November 20<sup>th</sup> to support the completion of surveys in that region of the watershed; although one landowner reported very brief (less than 1 day) connectivity around November 6<sup>th</sup> (A. Robinson pers. comm). Aside from surface flow levels there were no identified fish passage barriers during the season.

<b>Table 1. Scott River Mainstem Index Reaches</b>					
Index Reach	Reach Description	Upstream River Mile	Downstream River Mile	Total Length	Length Surveyed 2017
9	Oro Fino to Quartz Valley Bridge	28.6	24.4	4.2	2.8
10	Highway 3 to Oro Fino	35.6	28.6	7	0
11	Eller Lane to Highway 3	41.1	35.6	5.5	0.4
12	Etna Creek to Eller Lane	44.7	41.1	3.6	2.0
13	Horn Lane to Etna Creek	46.5	44.7	1.8	1.9
14	Young's Point to Horn Lane	48.6	46.5	2.1	2.1
15	Fay Lane to Young's Point	52.2	48.6	3.6	3.7
16	Callahan to Fay Lane	59.1	52.2	6.9	1.0
<b>Total</b>				<b>34.7</b>	<b>13.9</b>

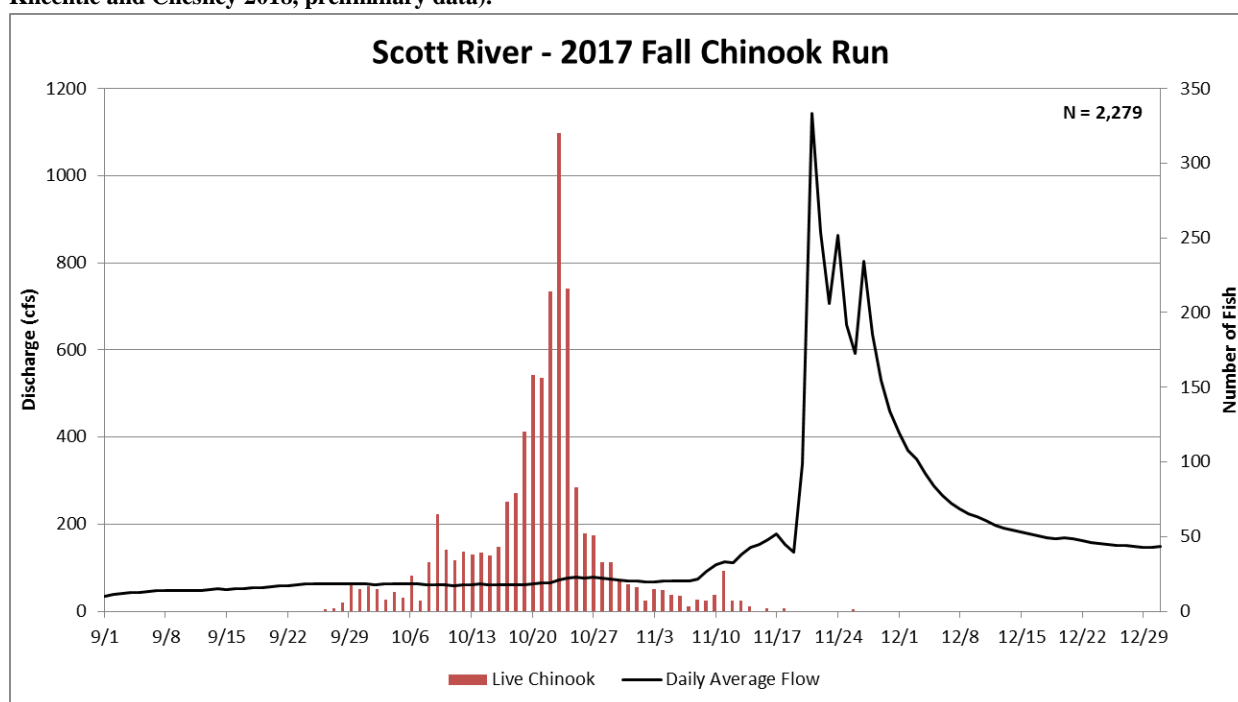
**Map 1. Stream reaches surveyed by the Siskiyou RCD during the 2017 fall-Chinook run.**



## Lives

CDFW operates a Fish Counting Facility on the Scott River, which is situated at river mile 18.2 near the transition between the canyon and the low-gradient valley. A net total of 2,279 Chinook were recorded passing upstream through the video weir from September 26<sup>th</sup> through December 10<sup>th</sup> 2017 (Knechtle and Chesney 2018, preliminary data, Figure 1). To the best of our knowledge, above-average water year conditions maintained connectivity of the Scott River through the valley during the low-flow period of 2017 (excluding the historic mining tailings). This insured that fish passage into the valley spawning grounds during the fall run was not a concern. The USGS streamflow gage at river mile 21 remained around 60-80 cfs through most of the migration period (USGS 2017, preliminary data). Pairs of Chinook salmon were consistently encountered by surveyors through the valley reaches of the mainstem from October 17<sup>th</sup> to November 20<sup>th</sup> 2017 (Appendix A).

**Figure 1. Scott River streamflow and Chinook migration through the CDFW Fish Counting Facility (USGS 2017 & Knechtle and Chesney 2018, preliminary data).**



## Biological Samples

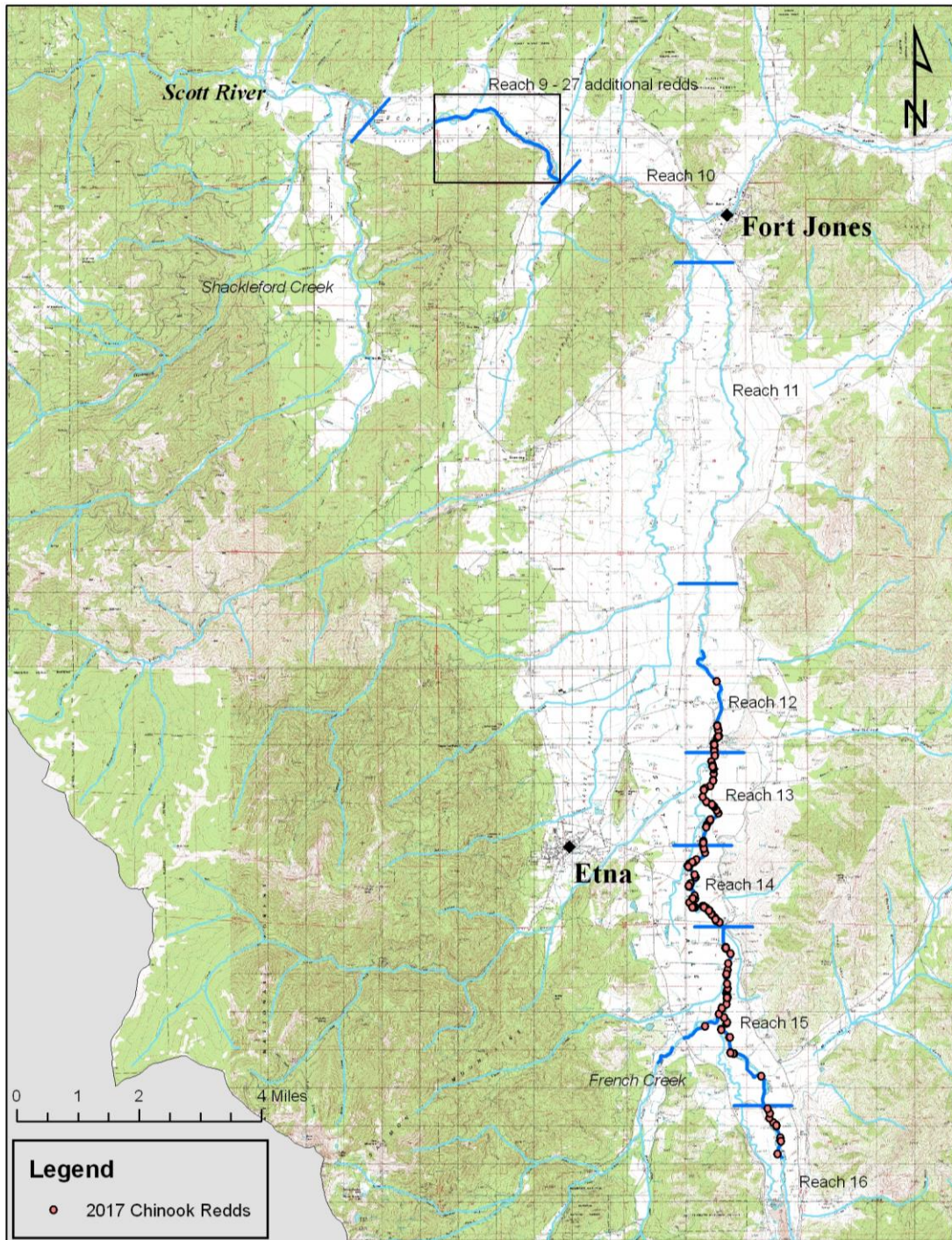
All carcasses encountered (with the exception of those that were inaccessible) were inventoried and then chopped to indicate that they had been handled. Surveyors recorded the fork length, sex, and presence of hatchery markings (if any). They also checked females for evidence of pre-spawn mortality. A total of 300 Chinook carcasses were handled and inventoried by RCD field technicians over the season (Appendix B). Of these, 51% were females and 48% were males; the remaining 1% of the carcasses were too deteriorated to determine the sex. No evidence of pre-spawn mortality was found. There were not any recovered carcasses with hatchery markings.

There were 291 recovered carcasses that were of suitable condition to allow for scale samples to be collected (Appendix B). Gill plate and otolith samples were also gathered from selected carcasses, generally the first fish encountered per reach on each survey day. All samples were submitted to CDFW – Yreka Fisheries Office for further distribution and analysis.

## Redds

Due to favorable stream conditions, surveyors were often able to find the pair of fish responsible for constructing a redd and observe the development of the spawning site from week to week. Redds identified on each survey were inventoried and flagged to indicate that they had been documented. Surveyors recorded habitat type, dimensions, superimposition and presence of fish in the vicinity of the site. GPS coordinates were collected for every redd where permitted by landowners.

**Map 2. Chinook redds identified by the Siskiyou RCD during the 2017 fall-run.**



Surveys were conducted on 13.9 miles of the Scott River mainstem covering the Index Reaches 9 and 11 – 16. Surveys were not conducted through or above the historic mining tailings due to insufficient connectivity during the run. There was a decent amount of spawning observed on the mainstem with the distribution spanning most of the surveyed length (Table 2, Map 2). Relative spawning densities were highest on reach 13 and 14.

Valley Reach	Total Number of Redds Identified
9 (partial access)	27
10	Not Surveyed
11 (partial access)	0
12 (partial access)	23
13	78
14	89
15	48
16 (partial access)	14
<b>Total</b>	<b>279</b>

With the exception of French Creek, connectivity prevented fish from entering western tributaries to the Scott River until mid-November. Surveys though 1.2 miles of French Creek on November 8<sup>th</sup> identified a single redd at river mile 0.4 (Table 3, Map 2). A live female Chinook was encountered in the vicinity of the spawning site. From November 10<sup>th</sup> through 20<sup>th</sup> Shackleford Creek, Etna Creek and Kidder Creek sequentially connected, however, spawning had subsided to the extent that the RCD presumed Chinook were no longer migrating upstream and therefore surveys were not organized on any other tributaries (Table 3).

Tributary	Total Number of Redds Identified
Shackleford Creek	Not Surveyed
Kidder Creek	Not Surveyed
Etna Creek	Not Surveyed
French Creek	1
Sugar Creek	Not Surveyed
<b>Total</b>	<b>1</b>

## Conclusions

Since 1978, the natural Chinook escapement into the Scott River has ranged from 14,477 fish (1995) to 467 fish (2004) (Knechtle and Chesney 2018). In line with predictions of a small brood, the total escapement in 2017 was estimated at 2,576 fish, which is a fair amount below the average of 5,313 fish. It is likely that returns to the Scott River were positively influenced by regulations and management of harvest.

The fall of 2017 was characterized by little precipitation and therefore very moderate and stable flows. Although we typically see the Chinook migration coincide with pulse flow events, in the absence of these environmental cues, the timing of the run remained relatively normal. Furthermore, the spawning distribution and habitat utilization of the mainstem Scott River was typical of the species.

Due to the timing of connectivity of the western tributaries to the Scott River, only French Creek was considered to be potentially utilized by spawning Chinook. Surveys identified the upper extent of Chinook spawning to be 0.4 river miles up the tributary.

Knechtle, M. and Chesney, D. 2018. 2017 Scott River Salmon Studies Final Report. California Department of Fish and Wildlife, Northern Region. Available at 1625 South Main Street Yreka Ca. 96097

U.S. Geological Survey (USGS). 2017. Discharge records for Scott River Gage 11519500 near Fort Jones. (data was identified as preliminary at time of retrieval) [http://waterdata.usgs.gov/usa/nwis/inventory/?site\\_no=11519500&agency\\_cd=USGS](http://waterdata.usgs.gov/usa/nwis/inventory/?site_no=11519500&agency_cd=USGS)

**Appendix A. Summary of Chinook Spawning Ground Surveys Completed by the Siskiyou Resource Conservation District, 2017 Fall Run**

Date	Stream	Reach	Lives	Redds	Carcasses		Notes
					Inventoried	Sampled	
10/17/2017	Scott River	9 partial	5	2	0	0	Identified juvenile Pacific lamprey
10/17/2017	Scott River	11 partial	0	0	0	0	
10/19/2017	Scott River	14	4	2	0	0	
10/19/2017	Scott River	15	1	2	0	0	Found 2 adult Pacific lamprey carcasses and 1 juvenile western pond turtle carcass
10/20/2017	Scott River	13	37	NR	0	0	Identified mature western pond turtle and found juvenile turtle carcass
10/23/2017	Scott River	14	35	13	0	0	
10/23/2017	Scott River	15	21	10	0	0	Identified mature western pond turtle
10/24/2017	Scott River	11 partial	0	0	0	0	
10/24/2017	Scott River	12 partial	26	7	0	0	
10/24/2017	Scott River	13	117	29	0	0	
10/25/2017	Scott River	9 partial	12	6	0	0	Identified juvenile Pacific lamprey
10/25/2017	Scott River	16 partial	7	2	1	1	
10/26/2017	Scott River	15	37	7	0	0	
10/27/2017	Scott River	14	97	28	3	3	
10/28/2017	Scott River	12 partial	26	6	2	2	additional steelhead trout and adult Pacific lamprey carcasses recovered
10/28/2017	Scott River	13	102	21	1	1	additional steelhead trout carcass recovered
10/30/2017	Scott River	12 partial	8	0	2	2	live coho salmon identified
10/30/2017	Scott River	13	135	0	4	4	
10/30/2017	Scott River	14	127	15	3	3	
10/30/2017	Scott River	15	76	15	1	1	
11/1/2017	Scott River	9 partial	27	14	4	4	
11/1/2017	Scott River	11 partial	0	0	0	0	
11/1/2017	Scott River	16 partial	21	9	1	1	
11/2/2017	Scott River	12 partial	32	0	8	8	
11/2/2017	Scott River	13	87	6	17	14	
11/2/2017	Scott River	14	131	13	7	7	
11/2/2017	Scott River	15	78	10	8	8	

**Appendix A. Summary of Chinook Spawning Ground Surveys Completed by the Siskiyou Resource Conservation District, 2017 Fall Run**

Date	Stream	Reach	Lives	Redds	Carcasses		Notes
					Inventoried	Sampled	
11/6/2017	Scott River	12 partial	12	NR	2	2	additional steelhead trout carcass recovered
11/6/2017	Scott River	13	83	NR	25	25	
11/6/2017	Scott River	14	94	9	13	13	
11/6/2017	Scott River	15	60	1	18	16	
11/8/2017	Scott River	16 partial	12	2	1	1	
11/8/2017	French Creek	lower	1	1	0	0	French Cr. connected at confluence with Scott River
11/8/2017	French Creek	middle partial	0	0	0	0	
11/9/2017	Scott River	9 partial	17	5	7	7	
11/9/2017	Scott River	14	72	3	30	25	
11/10/2017	Scott River	12 partial	22	10	11	11	
11/10/2017	Scott River	13	64	15	25	25	
11/10/2017	Scott River	15	44	0	7	6	
11/13/2017	Scott River	12 partial	8	NR	6	6	
11/13/2017	Scott River	13	36	4	13	13	
11/13/2017	Scott River	14	53	3	22	22	
11/13/2017	Scott River	15	25	3	11	11	
11/15/2017	Scott River	9 partial	5	0	5	5	Kidder Cr. not yet connected
11/15/2017	Scott River	16 partial	2	0	0	0	
11/16/2017	Scott River	14	43	3	8	7	
11/16/2017	Scott River	15	10	0	7	7	
11/17/2017	Scott River	12 partial	9	NR	8	8	
11/17/2017	Scott River	13	28	NR	13	13	Etna Cr. connected at confluence with Scott River
11/20/2017	Scott River	12 partial	0	NR	0	0	
11/20/2017	Scott River	13	6	3	4	4	
11/20/2017	Scott River	14	9	0	3	3	
11/20/2017	Scott River	15	4	0	2	2	
11/20/2017	Scott River	16 partial	5	1	0	0	
12/1/2017	Scott River	9 partial	0	0	0	0	

NR = Not Recorded

**Total 1,973 280 303 291**



**Appendix B. Summary of Chinook Salmon Carcasses Recovered by the Siskiyou Resource Conservation District, 2017 Fall Run**

#	Date	Stream	Reach	FL	Sex	Spawned	Ad Clip	Sample Number	Biological	
									Samples	Notes
1	10/25/2017	Scott River	16	57	F	Y	N	sc-102517-R16-01	STO	predation, FL not representative
2	10/27/2017	Scott River	14	78	M	-	N	sc-102717-R14-01	STO	
3	10/27/2017	Scott River	14	81	M	-	N	sc-102717-R14-02	STO	
4	10/27/2017	Scott River	14	47	M	-	N	sc-102717-R14-03	STO	
5	10/28/2017	Scott River	12	73	F	Y	N	sc-102817-R12-01	STO	
6	10/28/2017	Scott River	12	72	M	-	N	sc-102817-R12-02	S	
7	10/28/2017	Scott River	13	68	F	Y	N	sc-102817-R13-02	STO	
8	10/30/2017	Scott River	12	77	M	-	N	sc-103017-R12-01	STO	
9	10/30/2017	Scott River	12	69	F	Y	N	sc-103017-R12-02	S	
10	10/30/2017	Scott River	13	82	M	-	N	sc-103017-R13-01	STO	
11	10/30/2017	Scott River	13	83	M	-	N	sc-103017-R13-02	S	
12	10/30/2017	Scott River	13	71	F	Y	N	sc-103017-R13-03	S	
13	10/30/2017	Scott River	13	75	M	-	N	sc-103017-R13-04	S	
14	10/30/2017	Scott River	14	66	F	Y	N	sc-103017-R14-01	STO	
15	10/30/2017	Scott River	14	77	M	-	N	sc-103017-R14-02	S	
16	10/30/2017	Scott River	14	45	M	-	N	sc-103017-R14-03	S	
17	10/30/2017	Scott River	15	68	F	Y	N	sc-103017-R15-01	STO	
18	11/1/2017	Scott River	9	47	F	Y	N	sc-110117-R09-01	STO	
19	11/1/2017	Scott River	9	77	M	-	N	sc-110117-R09-02	S	
20	11/1/2017	Scott River	9	69	F	Y	N	sc-110117-R09-03	S	
21	11/1/2017	Scott River	9	86	F	Y	N	sc-110117-R09-04	S	
22	11/1/2017	Scott River	16	68	M	-	N	sc-110117-R16-01	STO	
23	11/2/2017	Scott River	12	76	M	-	N	sc-110217-R12-01	STO	
24	11/2/2017	Scott River	12	73	F	Y	N	sc-110217-R12-02	S	
25	11/2/2017	Scott River	12	76	M	-	N	sc-110217-R12-03	S	
26	11/2/2017	Scott River	12	65	M	-	N	sc-110217-R12-04	S	
27	11/2/2017	Scott River	12	86	M	-	N	sc-110217-R12-05	S	
28	11/2/2017	Scott River	12	79	F	Y	N	sc-110217-R12-06	S	

**Appendix B. Summary of Chinook Salmon Carcasses Recovered by the Siskiyou Resource Conservation District, 2017 Fall Run**

#	Date	Stream	Reach	FL	Sex	Spawned	Ad Clip	Sample Number	Biological	
									Samples	Notes
29	11/2/2017	Scott River	12	50	M	-	N	sc-110217-R12-07	S	
30	11/2/2017	Scott River	12	52	F	Y	N	sc-110217-R12-08	S	
31	11/2/2017	Scott River	13	67	F	Y	N	sc-110217-R13-01	STO	
32	11/2/2017	Scott River	13	72	F	Y	N	sc-110217-R13-02	S	
33	11/2/2017	Scott River	13	78	M	-	N	sc-110217-R13-03	S	
34	11/2/2017	Scott River	13	67	F	Y	N	sc-110217-R13-04	S	
35	11/2/2017	Scott River	13	47	M	-	N	sc-110217-R13-05	S	
36	11/2/2017	Scott River	13	59	F	Y	N	sc-110217-R13-06	S	
37	11/2/2017	Scott River	13	68	F	Y	N	sc-110217-R13-07	S	
38	11/2/2017	Scott River	13	64	F	Y	N	sc-110217-R13-08	S	
39	11/2/2017	Scott River	13	70	F	Y	N	sc-110217-R13-09	S	
40	11/2/2017	Scott River	13	78	M	-	N	sc-110217-R13-10	S	
41	11/2/2017	Scott River	13	70	M	-	N	sc-110217-R13-11	S	
42	11/2/2017	Scott River	13	53	M	-	N	sc-110217-R13-12	S	
43	11/2/2017	Scott River	13	70	F	Y	N	sc-110217-R13-13	S	
44	11/2/2017	Scott River	13	72	M	-	N	sc-110217-R13-14	S	
45	11/2/2017	Scott River	13							Remnant
46	11/2/2017	Scott River	13							Remnant
47	11/2/2017	Scott River	13							Remnant
48	11/2/2017	Scott River	14	80	M	-	N	sc-110217-R14-01	STO	
49	11/2/2017	Scott River	14	49	M	-	N	sc-110217-R14-02	S	
50	11/2/2017	Scott River	14	65	F	Y	N	sc-110217-R14-03	S	
51	11/2/2017	Scott River	14	44	M	-	N	sc-110217-R14-04	S	
52	11/2/2017	Scott River	14	74	M	-	N	sc-110217-R14-05	S	
53	11/2/2017	Scott River	14	60	F	Y	N	sc-110217-R14-06	S	
54	11/2/2017	Scott River	14	75	F	Y	N	sc-110217-R14-07	S	
55	11/2/2017	Scott River	15	64	F	Y	N	sc-110217-R15-01	STO	
56	11/2/2017	Scott River	15	71	M	-	N	sc-110217-R15-02	S	

**Appendix B. Summary of Chinook Salmon Carcasses Recovered by the Siskiyou Resource Conservation District, 2017 Fall Run**

#	Date	Stream	Reach	FL	Sex	Spawned	Ad Clip	Sample Number	Biological	
									Samples	Notes
57	11/2/2017	Scott River	15	70	F	Y	N	sc-110217-R15-03	S	
58	11/2/2017	Scott River	15	70	F	Y	N	sc-110217-R15-04	S	
59	11/2/2017	Scott River	15	74	M	-	N	sc-110217-R15-05	S	
60	11/2/2017	Scott River	15	72	M	-	N	sc-110217-R15-06	S	
61	11/2/2017	Scott River	15	76	M	-	N	sc-110217-R15-07	S	
62	11/2/2017	Scott River	15	68	F	Y	N	sc-110217-R15-08	S	
63	11/6/2017	Scott River	12	76	M	-	N	sc-110617-R12-01	STO	
64	11/6/2017	Scott River	12	68	F	Y	N	sc-110617-R12-02	S	
65	11/6/2017	Scott River	13	70	F	Y	N	sc-110617-R13-01	STO	
66	11/6/2017	Scott River	13	79	M	-	N	sc-110617-R13-02	S	
67	11/6/2017	Scott River	13	66	F	Y	N	sc-110617-R13-03	S	
68	11/6/2017	Scott River	13	71	M	-	N	sc-110617-R13-04	S	
69	11/6/2017	Scott River	13	50	M	-	N	sc-110617-R13-05	S	
70	11/6/2017	Scott River	13	54	M	-	N	sc-110617-R13-06	S	
71	11/6/2017	Scott River	13	73	M	-	N	sc-110617-R13-07	S	
72	11/6/2017	Scott River	13	79	F	Y	N	sc-110617-R13-08	S	
73	11/6/2017	Scott River	13	71	F	Y	N	sc-110617-R13-09	S	
74	11/6/2017	Scott River	13	71	F	Y	N	sc-110617-R13-10	S	
75	11/6/2017	Scott River	13	64	F	Y	N	sc-110617-R13-11	S	
76	11/6/2017	Scott River	13	71	M	-	N	sc-110617-R13-12	S	
77	11/6/2017	Scott River	13	70	F	Y	N	sc-110617-R13-13	S	
78	11/6/2017	Scott River	13	65	F	Y	N	sc-110617-R13-14	S	
79	11/6/2017	Scott River	13	81	F	Y	N	sc-110617-R13-15	S	
80	11/6/2017	Scott River	13	85	F	Y	N	sc-110617-R13-16	S	
81	11/6/2017	Scott River	13	72	F	Y	N	sc-110617-R13-17	S	
82	11/6/2017	Scott River	13	45	M	-	N	sc-110617-R13-18	S	
83	11/6/2017	Scott River	13	70	F	Y	N	sc-110617-R13-19	S	
84	11/6/2017	Scott River	13	83	M	-	N	sc-110617-R13-20	S	

**Appendix B. Summary of Chinook Salmon Carcasses Recovered by the Siskiyou Resource Conservation District, 2017 Fall Run**

#	Date	Stream	Reach	FL	Sex	Spawned	Ad Clip	Sample Number	Biological	
									Samples	Notes
85	11/6/2017	Scott River	13	79	M	-	N	sc-110617-R13-21	S	
86	11/6/2017	Scott River	13	69	F	Y	N	sc-110617-R13-22	S	
87	11/6/2017	Scott River	13	74	M	-	N	sc-110617-R13-23	S	
88	11/6/2017	Scott River	13	70	F	Y	N	sc-110617-R13-24	S	
89	11/6/2017	Scott River	13	69	F	Y	N	sc-110617-R13-25	S	
90	11/6/2017	Scott River	14	67	F	Y	N	sc-110617-R14-01	STO	
91	11/6/2017	Scott River	14	80	M	-	N	sc-110617-R14-02	S	
92	11/6/2017	Scott River	14	75	M	-	N	sc-110617-R14-03	S	
93	11/6/2017	Scott River	14	74	F	Y	N	sc-110617-R14-04	S	
94	11/6/2017	Scott River	14	64	F	Y	N	sc-110617-R14-05	S	
95	11/6/2017	Scott River	14	70	F	Y	N	sc-110617-R14-06	S	
96	11/6/2017	Scott River	14	69	F	Y	N	sc-110617-R14-07	S	
97	11/6/2017	Scott River	14	82	M	-	N	sc-110617-R14-08	S	
98	11/6/2017	Scott River	14	65	F	Y	N	sc-110617-R14-09	S	
99	11/6/2017	Scott River	14	72	M	-	N	sc-110617-R14-10	S	
100	11/6/2017	Scott River	14	76	M	-	N	sc-110617-R14-11	S	
101	11/6/2017	Scott River	14	66	M	-	N	sc-110617-R14-12	S	
102	11/6/2017	Scott River	14	85	M	-	N	sc-110617-R14-13	S	
103	11/6/2017	Scott River	15	69	F	Y	N	sc-110617-R15-01	STO	
104	11/6/2017	Scott River	15	72	M	-	N	sc-110617-R15-02	S	
105	11/6/2017	Scott River	15	UNK	F	UNK				Inaccessible
106	11/6/2017	Scott River	15	49	M	-	N	sc-110617-R15-03	S	
107	11/6/2017	Scott River	15	74	F	Y	N	sc-110617-R15-04	S	
108	11/6/2017	Scott River	15	76	M	-	N	sc-110617-R15-05	S	
109	11/6/2017	Scott River	15	64	F	y	N	sc-110617-R15-06	S	
110	11/6/2017	Scott River	15	71	F	Y	N	sc-110617-R15-07	S	
111	11/6/2017	Scott River	15	75	M	-	N	sc-110617-R15-08	S	
112	11/6/2017	Scott River	15	64	F	Y	N	sc-110617-R15-09	S	

**Appendix B. Summary of Chinook Salmon Carcasses Recovered by the Siskiyou Resource Conservation District, 2017 Fall Run**

#	Date	Stream	Reach	FL	Sex	Spawned	Ad Clip	Sample Number	Biological	
									Samples	Notes
113	11/6/2017	Scott River	15	76	M	-	N	sc-110617-R15-10	S	
114	11/6/2017	Scott River	15	63	M	-	N	sc-110617-R15-11	S	
115	11/6/2017	Scott River	15	73	M	-	N	sc-110617-R15-12	S	
116	11/6/2017	Scott River	15	78	M	-	N	sc-110617-R15-13	S	
117	11/6/2017	Scott River	15	70	F	Y	N	sc-110617-R15-14	S	
118	11/6/2017	Scott River	15	63	F	Y	N	sc-110617-R15-15	S	
119	11/6/2017	Scott River	15	UNK	UNK	-				Inaccessible
120	11/6/2017	Scott River	15	77	M	-	N	sc-110617-R15-16	S	
121	11/8/2017	Scott River	16	62	F	Y	N	sc-110817-R16-01	STO	
122	11/9/2017	Scott River	9	72	F	Y	N	sc-110917-R9-01	STO	
123	11/9/2017	Scott River	9	80	F	Y	N	sc-110917-R9-02	S	
124	11/9/2017	Scott River	9	69	F	Y	N	sc-110917-R9-03	S	
125	11/9/2017	Scott River	9	71	M	-	N	sc-110917-R9-04	S	
126	11/9/2017	Scott River	9	62	F	Y	N	sc-110917-R9-05	S	
127	11/9/2017	Scott River	9	51	M	-	N	sc-110917-R9-06	S	
128	11/9/2017	Scott River	9	49	F	Y	N	sc-110917-R9-07	S	
129	11/9/2017	Scott River	14	70	F	Y	N	sc-110917-R14-01	STO	
130	11/9/2017	Scott River	14	68	M	-	N	sc-110917-R14-02	S	
131	11/9/2017	Scott River	14	64	F	Y	N	sc-110917-R14-03	S	
132	11/9/2017	Scott River	14	51	M	-	N	sc-110917-R14-04	S	
133	11/9/2017	Scott River	14	70	F	Y	N	sc-110917-R14-05	S	
134	11/9/2017	Scott River	14	82	M	-	N	sc-110917-R14-06	S	
135	11/9/2017	Scott River	14	52	M	-	N	sc-110917-R14-07	S	
136	11/9/2017	Scott River	14	66	F	Y	N	sc-110917-R14-08	S	
137	11/9/2017	Scott River	14	79	M	-	N	sc-110917-R14-09	S	
138	11/9/2017	Scott River	14	79	M	-	N	sc-110917-R14-10	S	
139	11/9/2017	Scott River	14	74	F	Y	N	sc-110917-R14-11	S	
140	11/9/2017	Scott River	14	75	M	-	N	sc-110917-R14-12	S	

**Appendix B. Summary of Chinook Salmon Carcasses Recovered by the Siskiyou Resource Conservation District, 2017 Fall Run**

#	Date	Stream	Reach	FL	Sex	Spawned	Ad Clip	Sample Number	Biological	
									Samples	Notes
141	11/9/2017	Scott River	14	80	M	-	N	sc-110917-R14-13	S	
142	11/9/2017	Scott River	14	74	M	-	N	sc-110917-R14-14	S	
143	11/9/2017	Scott River	14	75	F	Y	N	sc-110917-R14-15	S	
144	11/9/2017	Scott River	14	67	F	Y	N	sc-110917-R14-16	S	
145	11/9/2017	Scott River	14	70	F	Y	N	sc-110917-R14-17	S	
146	11/9/2017	Scott River	14	47	M	-	N	sc-110917-R14-18	S	
147	11/9/2017	Scott River	14	75	F	Y	N	sc-110917-R14-19	S	
148	11/9/2017	Scott River	14	73	M	-	N	sc-110917-R14-20	S	
149	11/9/2017	Scott River	14	84	M	-	N	sc-110917-R14-21	S	
150	11/9/2017	Scott River	14	67	F	Y	N	sc-110917-R14-22	S	
151	11/9/2017	Scott River	14	74	F	Y	N	sc-110917-R14-23	S	
152	11/9/2017	Scott River	14	74	F	Y	N	sc-110917-R14-24	S	
153	11/9/2017	Scott River	14	64	F	Y	N	sc-110917-R14-25	S	
154	11/9/2017	Scott River	14	76	M	-	N			Over limit
155	11/9/2017	Scott River	14	71	F	Y	N			Over limit
156	11/9/2017	Scott River	14	55	M	-	N			Over limit
157	11/9/2017	Scott River	14	78	M	-	N			Over limit
158	11/9/2017	Scott River	14	73	M	-	N			Over limit
159	11/10/2017	Scott River	12	79	F	Y	N	sc-111017-R12-01	STO	
160	11/10/2017	Scott River	12	48	M	-	N	sc-111017-R12-02	S	
161	11/10/2017	Scott River	12	71	F	Y	N	sc-111017-R12-03	S	
162	11/10/2017	Scott River	12	84	M	-	N	sc-111017-R12-04	S	
163	11/10/2017	Scott River	12	81	M	-	N	sc-111017-R12-05	S	
164	11/10/2017	Scott River	12	71	F	Y	N	sc-111017-R12-06	S	
165	11/10/2017	Scott River	12	57	M	-	N	sc-111017-R12-07	S	
166	11/10/2017	Scott River	12	68	F	Y	N	sc-111017-R12-08	S	
167	11/10/2017	Scott River	12	70	F	Y	N	sc-111017-R12-09	S	
168	11/10/2017	Scott River	12	77	M	-	N	sc-111017-R12-10	S	

**Appendix B. Summary of Chinook Salmon Carcasses Recovered by the Siskiyou Resource Conservation District, 2017 Fall Run**

#	Date	Stream	Reach	FL	Sex	Spawned	Ad Clip	Sample Number	Biological	
									Samples	Notes
169	11/10/2017	Scott River	12	66	F	Y	N	sc-111017-R12-11	S	
170	11/10/2017	Scott River	13	70	F	Y	N	sc-111017-R13-01	STO	
171	11/10/2017	Scott River	13	68	M	-	N	sc-111017-R13-02	S	
172	11/10/2017	Scott River	13	62	F	Y	N	sc-111017-R13-03	S	
173	11/10/2017	Scott River	13	74	M	-	N	sc-111017-R13-04	S	
174	11/10/2017	Scott River	13	65	F	Y	N	sc-111017-R13-05	S	
175	11/10/2017	Scott River	13	61	F	Y	N	sc-111017-R13-06	S	
176	11/10/2017	Scott River	13	75	M	-	N	sc-111017-R13-07	S	
177	11/10/2017	Scott River	13	75	M	-	N	sc-111017-R13-08	S	
178	11/10/2017	Scott River	13	56	M	-	N	sc-111017-R13-09	S	
179	11/10/2017	Scott River	13	65	F	Y	N	sc-111017-R13-10	S	
180	11/10/2017	Scott River	13	45	M	-	N	sc-111017-R13-11	S	
181	11/10/2017	Scott River	13	70	M	-	N	sc-111017-R13-12	S	
182	11/10/2017	Scott River	13	71	F	Y	N	sc-111017-R13-13	S	
183	11/10/2017	Scott River	13	53	M	-	N	sc-111017-R13-14	S	
184	11/10/2017	Scott River	13	80	M	-	N	sc-111017-R13-15	S	
185	11/10/2017	Scott River	13	74	M	-	N	sc-111017-R13-16	S	
186	11/10/2017	Scott River	13	61	F	Y	N	sc-111017-R13-17	S	
187	11/10/2017	Scott River	13	68	F	Y	N	sc-111017-R13-18	S	
188	11/10/2017	Scott River	13	50	M	-	N	sc-111017-R13-19	S	
189	11/10/2017	Scott River	13	66	F	Y	N	sc-111017-R13-20	S	
190	11/10/2017	Scott River	13	63	F	Y	N	sc-111017-R13-21	S	
191	11/10/2017	Scott River	13	70	F	Y	N	sc-111017-R13-22	S	
192	11/10/2017	Scott River	13	88	F	Y	N	sc-111017-R13-23	S	
193	11/10/2017	Scott River	13	71	F	Y	N	sc-111017-R13-24	S	
194	11/10/2017	Scott River	13	78	M	-	N	sc-111017-R13-25	S	
195	11/10/2017	Scott River	15	64	F	Y	N	sc-111017-R15-01	STO	
196	11/10/2017	Scott River	15	90	M	-	N	sc-111017-R15-02	S	

**Appendix B. Summary of Chinook Salmon Carcasses Recovered by the Siskiyou Resource Conservation District, 2017 Fall Run**

#	Date	Stream	Reach	FL	Sex	Spawned	Ad Clip	Sample Number	Biological	
									Samples	Notes
197	11/10/2017	Scott River	15	UNK	UNK	-				Inaccessible
198	11/10/2017	Scott River	15	67	F	Y	N	sc-111017-R15-03	S	
199	11/10/2017	Scott River	15	66	F	Y	N	sc-111017-R15-04	S	
200	11/10/2017	Scott River	15	67	F	UNK	UNK	sc-111017-R15-05	S	Predation
201	11/10/2017	Scott River	15	75	M	-	N	sc-111017-R15-06	S	
202	11/13/2017	Scott River	12	68	M	-	N	sc-111317-R12-01	STO	
203	11/13/2017	Scott River	12	76	M	-	N	sc-111317-R12-02	S	
204	11/13/2017	Scott River	12	68	F	Y	N	sc-111317-R12-03	S	
205	11/13/2017	Scott River	12	73	M	-	N	sc-111317-R12-04	S	
206	11/13/2017	Scott River	12	70	M	-	N	sc-111317-R12-05	S	
207	11/13/2017	Scott River	12	64	F	Y	N	sc-111317-R12-06	S	
208	11/13/2017	Scott River	13	86	M	-	N	sc-11317-R13-01	STO	
209	11/13/2017	Scott River	13	74	M	-	N	sc-11317-R13-02	S	
210	11/13/2017	Scott River	13	79	M	-	N	sc-11317-R13-03	S	
211	11/13/2017	Scott River	13	71	F	Y	N	sc-11317-R13-04	S	
212	11/13/2017	Scott River	13	75	F	Y	N	sc-11317-R13-05	S	
213	11/13/2017	Scott River	13	83	M	-	N	sc-11317-R13-06	S	
214	11/13/2017	Scott River	13	65	F	Y	N	sc-11317-R13-07	S	
215	11/13/2017	Scott River	13	66	F	Y	N	sc-11317-R13-08	S	
216	11/13/2017	Scott River	13	69	F	Y	N	sc-11317-R13-09	S	
217	11/13/2017	Scott River	13	70	F	Y	N	sc-11317-R13-10	S	
218	11/13/2017	Scott River	13	52	M	-	N	sc-11317-R13-11	S	
219	11/13/2017	Scott River	13	79	M	-	N	sc-11317-R13-12	S	
220	11/13/2017	Scott River	13	80	M	-	N	sc-11317-R13-13	S	
221	11/13/2017	Scott River	14	74	M	-	N	sc-111317-R14-01	STO	
222	11/13/2017	Scott River	14	76	M	-	N	sc-111317-R14-02	S	
223	11/13/2017	Scott River	14	65	F	Y	N	sc-111317-R14-03	S	
224	11/13/2017	Scott River	14	62	F	Y	N	sc-111317-R14-04	S	



**Appendix B. Summary of Chinook Salmon Carcasses Recovered by the Siskiyou Resource Conservation District, 2017 Fall Run**

#	Date	Stream	Reach	FL	Sex	Spawned	Ad Clip	Sample Number	Biological	
									Samples	Notes
225	11/13/2017	Scott River	14	71	F	Y	N	sc-111317-R14-05	S	
226	11/13/2017	Scott River	14	67	F	Y	N	sc-111317-R14-06	S	
227	11/13/2017	Scott River	14	62	F	Y	N	sc-111317-R14-07	S	
228	11/13/2017	Scott River	14	76	M	-	N	sc-111317-R14-08	S	
229	11/13/2017	Scott River	14	80	M	-	N	sc-111317-R14-09	S	
230	11/13/2017	Scott River	14	72	M	-	N	sc-111317-R14-10	S	
231	11/13/2017	Scott River	14	64	F	Y	N	sc-111317-R14-11	S	
232	11/13/2017	Scott River	14	67	F	Y	N	sc-111317-R14-12	S	
233	11/13/2017	Scott River	14	75	M	-	N	sc-111317-R14-13	S	
234	11/13/2017	Scott River	14	64	F	Y	N	sc-111317-R14-14	S	
235	11/13/2017	Scott River	14	62	F	Y	N	sc-111317-R14-15	S	
236	11/13/2017	Scott River	14	73	M	-	N	sc-111317-R14-16	S	
237	11/13/2017	Scott River	14	75	M	-	N	sc-111317-R14-17	S	
238	11/13/2017	Scott River	14	80	M	-	N	sc-111317-R14-18	S	
239	11/13/2017	Scott River	14	56	M	-	N	sc-111317-R14-19	S	
240	11/13/2017	Scott River	14	72	F	Y	N	sc-111317-R14-20	S	
241	11/13/2017	Scott River	14	65	M	-	N	sc-111317-R14-21	S	
242	11/13/2017	Scott River	14	50	M	-	N	sc-111317-R14-22	S	
243	11/13/2017	Scott River	15	68	M	-	N	sc-111317-R15-01	STO	
244	11/13/2017	Scott River	15	76	M	-	N	sc-111317-R15-02	S	
245	11/13/2017	Scott River	15	53	M	-	N	sc-111317-R15-03	S	
246	11/13/2017	Scott River	15	82	M	-	N	sc-111317-R15-04	S	
247	11/13/2017	Scott River	15	65	F	Y	N	sc-111317-R15-05	S	
248	11/13/2017	Scott River	15	71	M	-	N	sc-111317-R15-06	S	
249	11/13/2017	Scott River	15	70	M	-	N	sc-111317-R15-07	S	
250	11/13/2017	Scott River	15	68	F	Y	N	sc-111317-R15-08	S	
251	11/13/2017	Scott River	15	71	F	Y	N	sc-111317-R15-09	S	
252	11/13/2017	Scott River	15	68	F	Y	N	sc-111317-R15-10	S	

**Appendix B. Summary of Chinook Salmon Carcasses Recovered by the Siskiyou Resource Conservation District, 2017 Fall Run**

#	Date	Stream	Reach	FL	Sex	Spawned	Ad Clip	Sample Number	Biological	
									Samples	Notes
253	11/13/2017	Scott River	15	66	F	Y	N	sc-111317-R15-11	S	
254	11/15/2017	Scott River	9	79	M	-	N	sc-111517-R9-01	STO	
255	11/15/2017	Scott River	9	82	F	Y	N	sc-111517-R9-02	S	
256	11/15/2017	Scott River	9	70	F	Y	N	sc-111517-R9-03	S	
257	11/15/2017	Scott River	9	83	F	Y	N	sc-111517-R9-04	S	
258	11/15/2017	Scott River	9	61	F	Y	N	sc-111517-R9-05	S	
259	11/16/2017	Scott River	14	65	F	Y	N	sc-111617-R14-01	STO	
260	11/16/2017	Scott River	14	76	M	-	N	sc-111617-R14-02	S	
261	11/16/2017	Scott River	14	64	F	Y	N	sc-111617-R14-03	S	
262	11/16/2017	Scott River	14	65	F	Y	N	sc-111617-R14-04	S	
263	11/16/2017	Scott River	14	72	M	-	N	sc-111617-R14-05	S	
264	11/16/2017	Scott River	14	58	M	-	N	sc-111617-R14-06	S	
265	11/16/2017	Scott River	14	UNK	UNK	-	N			Remnant
266	11/16/2017	Scott River	14	53	F	Y	N	sc-111617-R14-07	S	
267	11/16/2017	Scott River	15	74	M	-	N	sc-111617-R15-01	STO	
268	11/16/2017	Scott River	15	62	F	Y	N	sc-111617-R15-02	S	
269	11/16/2017	Scott River	15	61	F	Y	N	sc-111617-R15-03	S	
270	11/16/2017	Scott River	15	66	F	Y	N	sc-111617-R15-04	S	
271	11/16/2017	Scott River	15	68	M	-	N	sc-111617-R15-05	S	
272	11/16/2017	Scott River	15	64	F	Y	N	sc-111617-R15-06	S	
273	11/16/2017	Scott River	15	75	M	-	N	sc-111617-R15-07	S	
274	11/17/2017	Scott River	12	91	M	-	N	sc-111717-R12-01	STO	
275	11/17/2017	Scott River	12	64	F	Y	N	sc-111717-R12-02	S	
276	11/17/2017	Scott River	12	69	M	-	N	sc-111717-R12-03	S	
277	11/17/2017	Scott River	12	77	M	-	N	sc-111717-R12-04	S	
278	11/17/2017	Scott River	12	80	M	-	N	sc-111717-R12-05	S	
279	11/17/2017	Scott River	12	80	M	-	N	sc-111717-R12-06	S	
280	11/17/2017	Scott River	12	65	F	Y	N	sc-111717-R12-07	S	

**Appendix B. Summary of Chinook Salmon Carcasses Recovered by the Siskiyou Resource Conservation District, 2017 Fall Run**

#	Date	Stream	Reach	FL	Sex	Spawned	Ad Clip	Sample Number	Biological	
									Samples	Notes
281	11/17/2017	Scott River	12	63	F	Y	N	sc-111717-R12-08	S	
282	11/17/2017	Scott River	13	68	F	Y	N	sc-111717-R13-01	STO	
283	11/17/2017	Scott River	13	68	F	Y	N	sc-111717-R13-02	S	
284	11/17/2017	Scott River	13	65	F	Y	N	sc-111717-R13-03	S	
285	11/17/2017	Scott River	13	64	F	Y	N	sc-111717-R13-04	S	
286	11/17/2017	Scott River	13	78	M	-	N	sc-111717-R13-05	S	
287	11/17/2017	Scott River	13	61	F	Y	N	sc-111717-R13-06	S	
288	11/17/2017	Scott River	13	77	M	-	N	sc-111717-R13-07	S	
289	11/17/2017	Scott River	13	60	F	Y	N	sc-111717-R13-08	S	
290	11/17/2017	Scott River	13	58	F	Y	N	sc-111717-R13-09	S	
291	11/17/2017	Scott River	13	59	F	Y	N	sc-111717-R13-10	S	
292	11/17/2017	Scott River	13	41	M	-	N	sc-111717-R13-11	S	
293	11/17/2017	Scott River	13	78	M	-	N	sc-111717-R13-12	S	
294	11/17/2017	Scott River	13	53	M	-	N	sc-111717-R13-13	S	
295	11/20/2017	Scott River	13	63	F	Y	N	sc-112017-R12-01	STO	
296	11/20/2017	Scott River	13	82	M	-	N	sc-112017-R12-02	S	
297	11/20/2017	Scott River	13	83	M	-	N	sc-112017-R12-03	S	
298	11/20/2017	Scott River	13	69	F	Y	N	sc-112017-R12-04	S	
299	11/20/2017	Scott River	14	58	F	Y	N	sc-112017-R14-01	STO	
300	11/20/2017	Scott River	14	70	M	-	N	sc-112017-R14-02	S	
301	11/20/2017	Scott River	14	71	F	Y	N	sc-112017-R14-03	S	
302	11/20/2017	Scott River	15	50	M	-	N	sc-112017-R15-01	STO	
303	11/20/2017	Scott River	15	59	F	Y	N	sc-112017-R15-02	S	